

# TIM-ABS

Thermomanometers

## Technical Data Sheet



## Description

Plastic case centre back entry. For water heating systems, boilers, pools and spas.



### TIM-ABS 63

DN63 thermomanometers.

Part No	Pressure Range	Temperature	Connection	Options	Box/Master	Min. order
	0-2.5 bar	0-120°C	G1/2B		1/50	50
PN3204BD01	0-4 bar	0-120°C	G1/2B	LF	1/50	50
PN3206VD03	0-6 bar	0-120°C	G1/2B	LF	1/50	50



### TIM-ABS 80

DN80 pressure gauges.

Part No	Pressure Range	Temperature	Connection	Options*	Box/Master	Min. order
PN4203BD02	0-2.5 bar	0-120°C	G1/2B	LF	1/50	1
PN4204BD12	0-4 bar	0-120°C	G1/2B	LF	1/50	1
PN4206BD05	0-6 bar	0-120°C	G1/2B	LF	1/50	1
PN4210BD00	0-10 bar	0-120°C	G1/2B	LF	1/50	1

#### \*Options included

LF = Fimet Watts logo on the dial

## Customizations per minimum order quantity

Customizations	Model
Customized dials, connections, other scale ranges on request	TIM-ABS 63/80

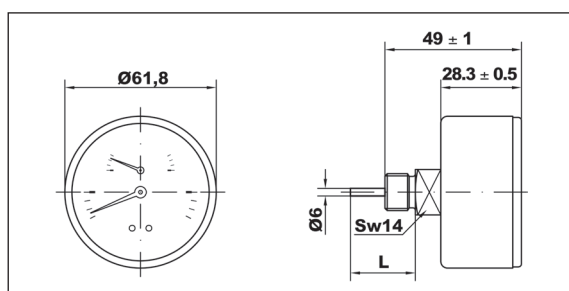
## Features

Materials	
Case	Black plastic
Window	Clear plastic with adjustable red mark pointer
Dial	Aluminium white
Pointer	Black plastic
Pressure connection	Cu-alloy, 14 mm flats
Pressure element	Bourdon tube Cu-alloy soft soldered, C-type
Movement	Cu-alloy
Temperature element	Bimetal spiralled
Automatic valve	Brass - polypropylene combination, 21 mm flats

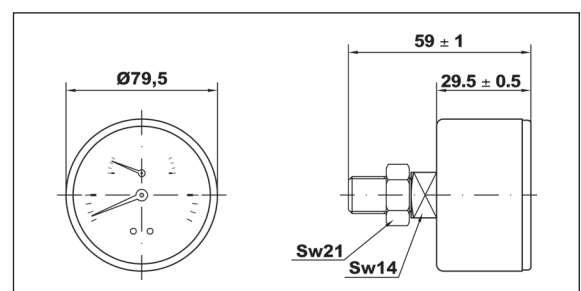
Technical features	
Design	EN 837-1 and EN 13190
Working pressure	Steady: 75 % of full scale value Fluctuating: not applicable Short time: full scale value
Temperature limits	Ambient: -5 ... +60°C Medium: +120°C maximum Storage: -20 ... +60°C
Temperature effect	For pressure only: deviation from reference temperature (+20°C): ±0,04%/1K of the span
Accuracy class	cl. 2.5 (Pressure), cl. 2 (Temperature)
Degree of protection	IP 31 for EN 60 529 / IEC 529
Individual weight.	
TIM-ABS 63	0.125 kg
TIM-ABS 80	0.165 kg

## Overall dimensions (mm)

### TIM-ABS 63



### TIM-ABS 80



## Specification text

Thermomanometers **Series TIM-ABS**, Watts brand, for water heating systems, boilers, pools and spas. Plastic case DN 63-80 back connection. Measures range at medium pressure from 2,5 up to 10 bar. Temperature limits + 120°C. Accuracy class 2.5 (pressure) - cl 2.0 (temperature). **Compliant with EN 837-1 (pressure) EN-13190 (temperature)**



---

The descriptions and photographs contained in this product specification sheet are supplied by way of information only and are not binding.  
Watts Industries reserves the right to carry out any technical and design improvements to its products without prior notice. Warranty: All sales and contracts for sale are expressly conditioned on the buyer's assent to Watts terms and conditions found on its website at [www.wattswater.eu](http://www.wattswater.eu). Watts hereby objects to any term, different from or additional to Watts terms, contained in any buyer communication in any form, unless agreed to in a writing signed by an officer of Watts.

---



---

**Watts Industries Italia S.r.l.**  
Via Brenno, 21 • 20853 Biassono (MB) • Italy  
Tel. +39 039 4986.1 • Fax +39 039 4986.222  
[infowattsitatia@wattswater.com](mailto:infowattsitatia@wattswater.com) • [www.watts.com](http://www.watts.com)