

1 UP 20-45 N 150



: [95906472](#)

*
*
*

, PES/PP.

1-

: -25 .. 110 °C

: 60 °C

983.2 kg/m³

: 95

: CE,EAC,WEEE

DIN W.-Nr. 1.4301

AISI 304

, PES/PP

80

: 40 °C

: 10 bar

G 1 1/4

PN 10

: 150 mm

: 120 W

50 Hz

: 1 x 230 V

3: 0.52 A

: 2.5 µF

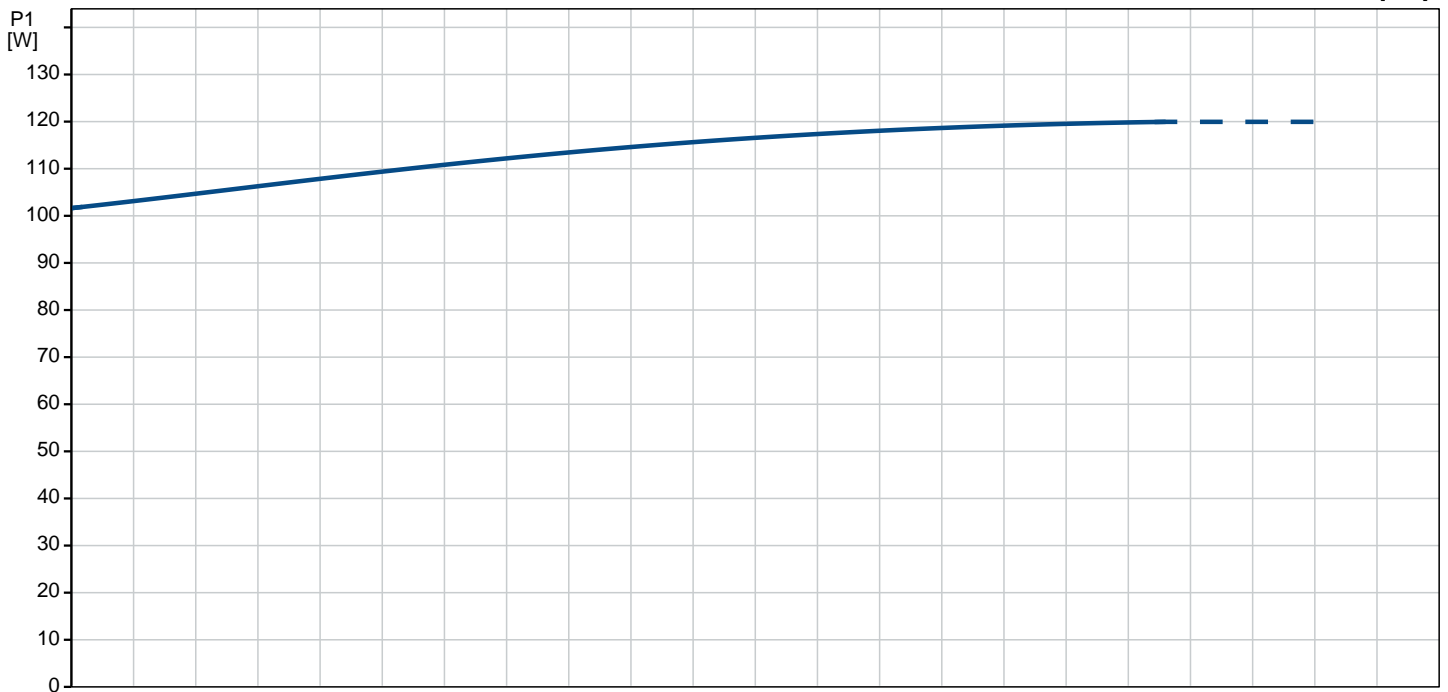
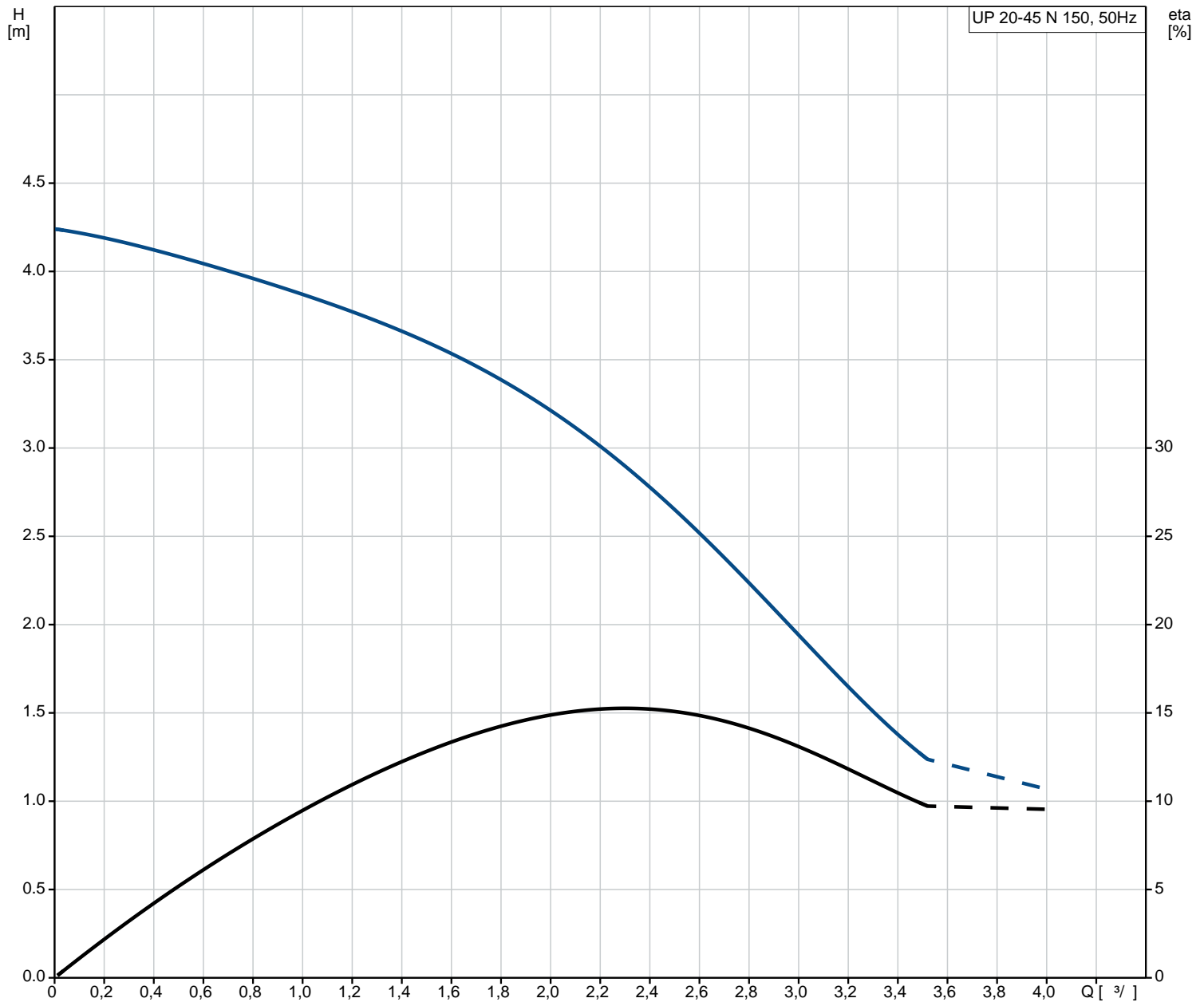
(IEC 34-5): X2D

(IEC 85): F

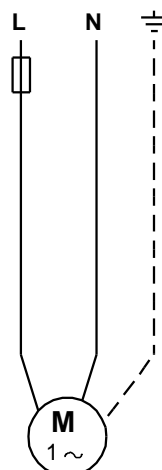
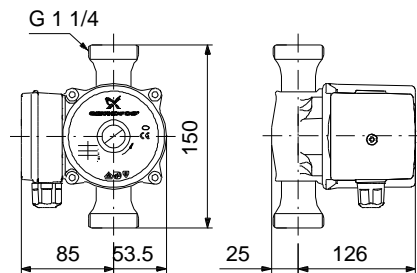
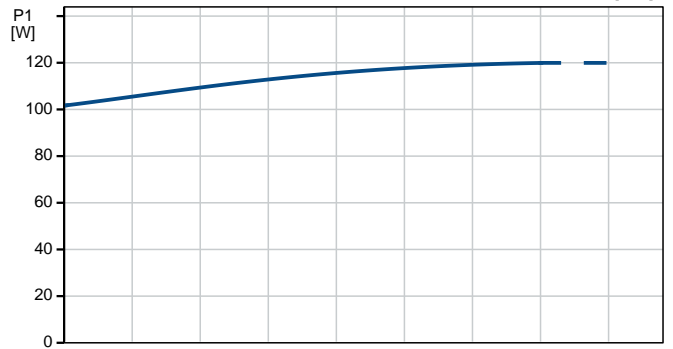
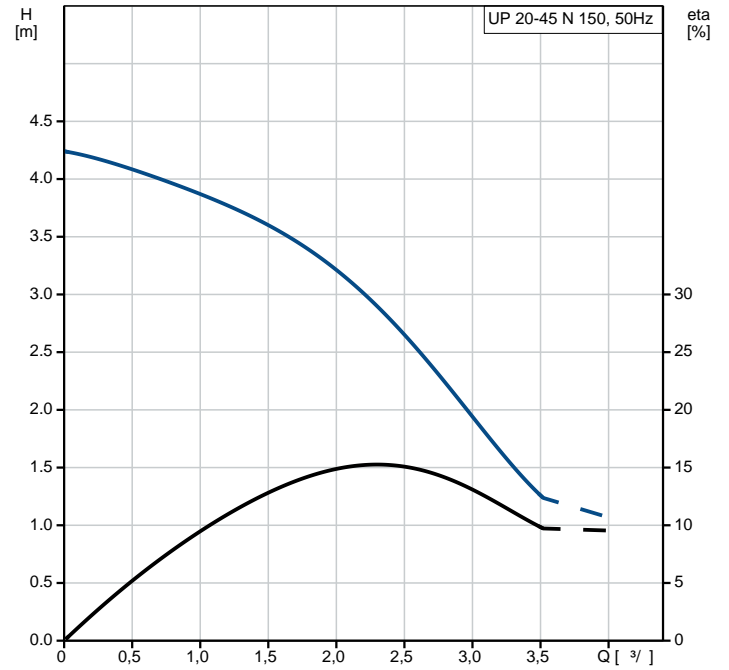
: 3.6 kg

: 3.8 kg
: 0.008 m³
VVS : 380625100
RSK : 5803038
LVI : 4615608
NRF : 9042213
: RS
: 84137030

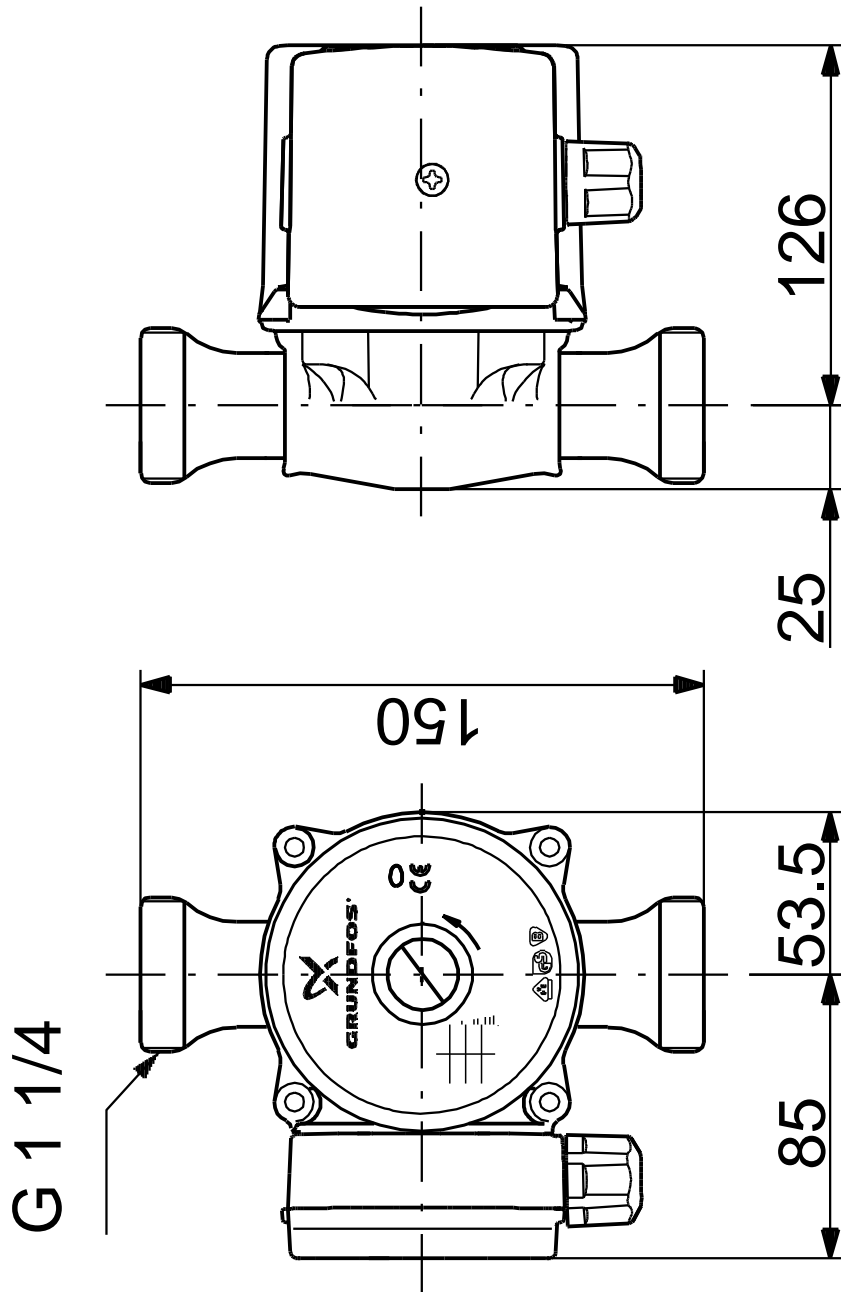
95906472 UP 20-45 N 150 50 Hz



No.:	UP 20-45 N 150
EAN	95906472
	5700310459660
No.:	1
	45 dm
	95
	CE,EAC,WEEE
	DIN W.-Nr. 1.4301
	AISI 304
	, PES/PP
80	40 °C
	10 bar
	G 1 1/4
	PN 10
	: 150 mm
	-25 .. 110 °C
	60 °C
	983.2 kg/m ³
	120 W
	50 Hz
	1 x 230 V
3:	0.52 A
	2.5 µF
(IEC 34-5):	X2D
(IEC 85):	F
	9H
	3.6 kg
	3.8 kg
	0.008 m ³
VVS	380625100
RSK	5803038
LVI	4615608
NRF	9042213
	RS
	84137030



95906472 UP 20-45 N 150 50 Hz



95906472 UP 20-45 N 150 50 Hz

